

# EMERALD CUSTOM POOLS

## 2023 Pricing Guide

Take the first steps to make  
your dream a reality

STYLES FOR  
EVERY  
BACKYARD  
PARADISE



00000000000000

Issue 3.1 January 2023

# TABLE OF CONTENT

**01**

**POOL ESTIMATES**

**16**

**OUTDOOR LIVING**

**21**

**FEATURES**

**33**

**TESTIMONIALS**



# WE BUILD MORE THAN POOLS, WE BUILD RELATIONSHIPS

EVERY HOMEOWNER  
SHOULD KNOW

At Emerald Custom Pools, we believe in building long-lasting relationships with our customers even after the build is complete. We strive to provide ongoing maintenance and service to ensure our customers remain satisfied with the work we've done for them. We also value referrals and appreciate it when our customers spread the word about our services.





ACTUAL  
DESIGN



# HOW *Much* IS IT?

At Emerald Custom Pools, we believe in building long-lasting relationships with our customers even after the build is complete. We strive to provide ongoing maintenance and service to ensure our customers remain satisfied with the work we've done for them. We also value referrals and appreciate it when our customers spread the word about our services.

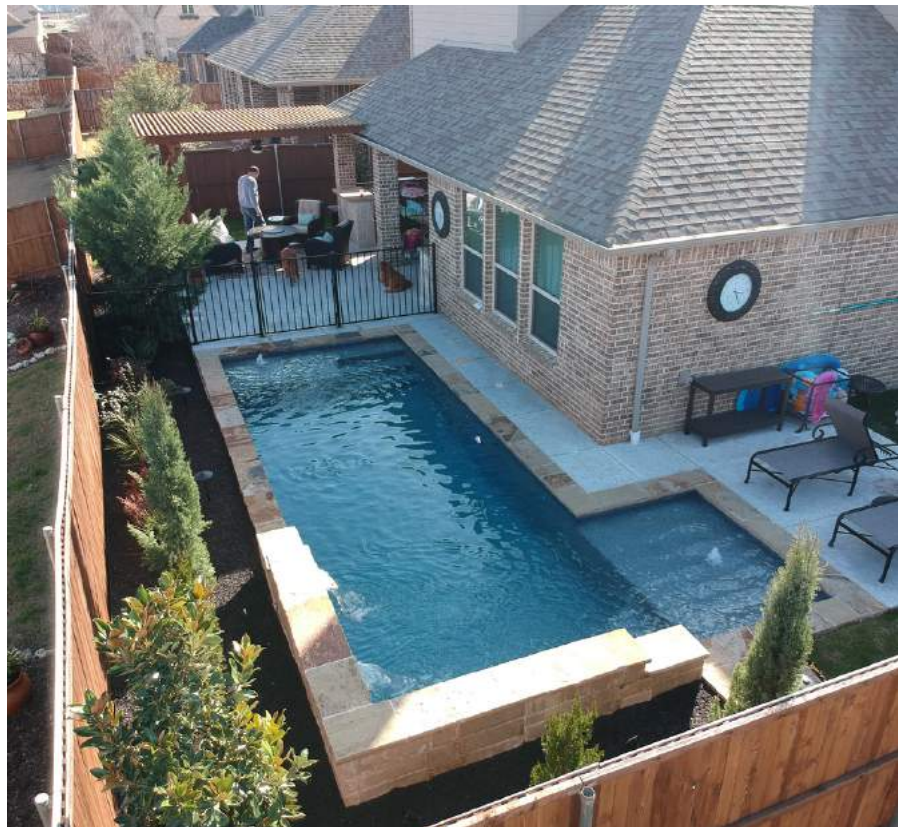
**THE PICTURES WE HAVE INCLUDED IN THIS PRICING GUIDE ARE ROUGH ESTIMATES TO GIVE YOU AN IDEA OF COST AND HELP YOU PLAN FOR YOUR INVESTMENT. PRICES ARE SUBJECT TO CHANGE WITHOUT NOTICE**





**Above-simple design with  
a 2 bubbler tan ledge.  
Size: up to 80' perimeter  
Cost: \$55,000-65,000**

**Right: ballpark \$65,000-  
75,000. Factors that  
increase cost are minimal  
access requiring smaller  
dig equipment, 2 entries  
with a raised beam water  
feature**







These pools are generally 80-95' perimeter. Tan ledge and/or small water feature added. Decking is not excessive and all used standard options on coping, decking and veneer

Ballpark pricing  
\$55-70,000





*enjoy the  
process*



## SIMPLE & FUN

These basic designs can truly show your unique ideas and make having fun look great! Ballpark pricing for the pools here are \$65-75k. Addition of Mondo-leave out decking in pic above can add extensive cost depending on sqft.





**Ballpark pricing is \$75-90k when a spa is added**

Flushed spa above can save a bit of money as it cuts out veneer cost. Every bubbler added in addition to the one included in a tan ledge adds about \$1000. Elevation can add cost and can sometimes be avoided by adding steps down to flat land.





Elevation can be an unwanted game changer

These appear to be simple pools until we have to build up decking, retaining walls, steps, etc to account for the elevation throughout the yard



These changes can add thousands in unexpected costs for decking, turndown, veneer even engineering when necessary



Ballpark for these pools is \$85-115k





If freeform is your thing? Add a spa, raised beam water feature and/or large tan ledge and stay in the ballpark of \$90-110k. Pools pictured here are larger than standard at about 90-100' perimeter.



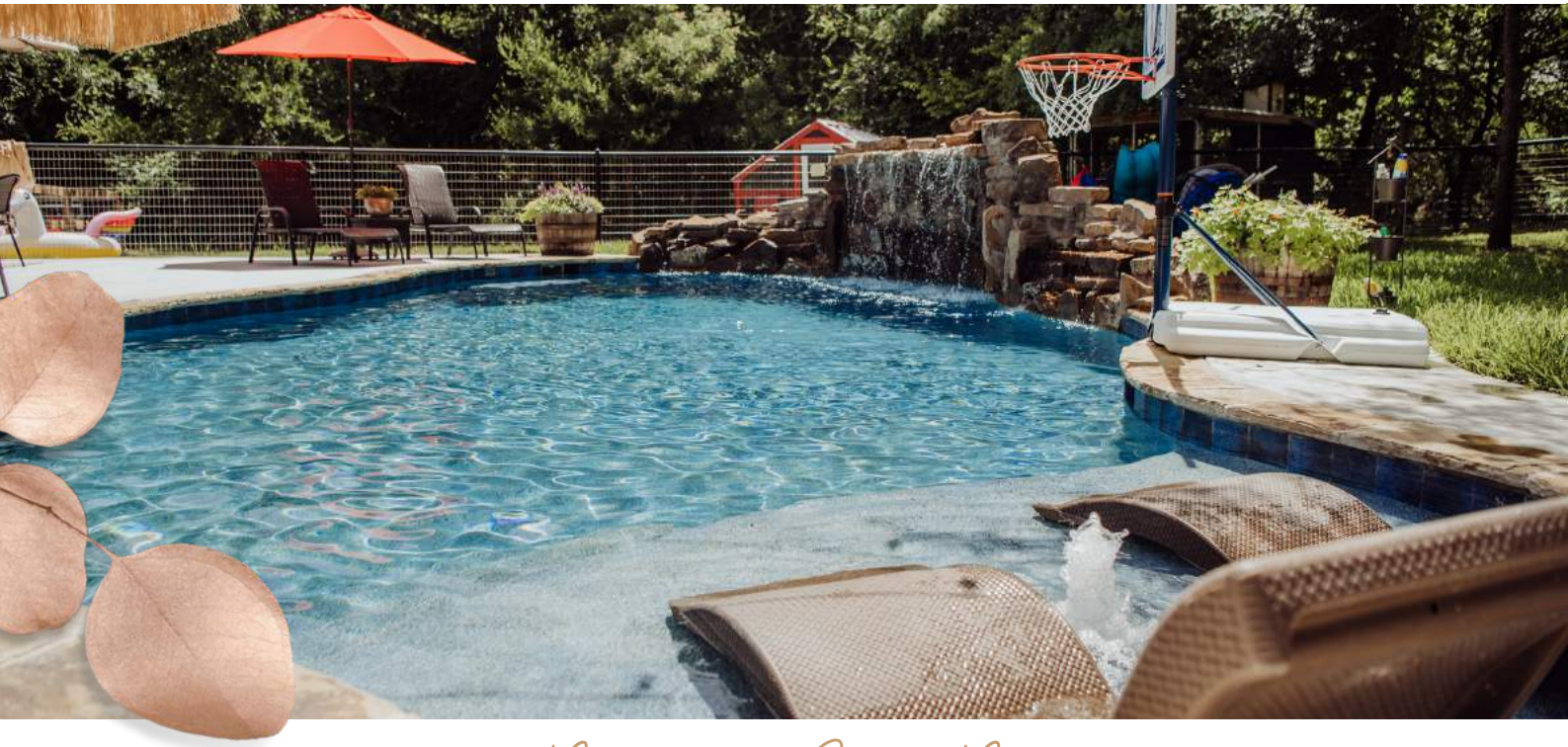




Extra 1 inch tile, large raised beam water features, multiple bubbler tan ledge and deck jets can definitely create a one-of-a-kind pool. These custom designs are in the ballpark of \$90-130k







*Bigger Can Be Better*



LARGE GROTTOS CAN ADD ABOUT \$20-30K ONTO A POOL BUDGET. SIZE, WEIGHT AND OTHER ADDITIONS SUCH AS SLIDES CAN PLAY A FACTOR. ADDITIONAL EQUIPMENT, ENHANCED AUTOMATION AND EVEN REINFORCED CONCRETE MAY BE REQUIRED.

COMBINING LONG RAISED BEAMS, OVERSIZED TAN LEDGES AND MARGARITA TABLES CAN BE A GREAT ADDITION TO CREATING YOUR BACKYARD SOCIAL HANGOUT AS WELL. BALLPARK PRICING \$95-130K





## WANT A BIT OF EVERYTHING

The addition of a Cabana with outdoor kitchen to any pool can be expensive, but so very worth it when you see the final product. This pool, grotto/slide combo, margarita table and outdoor living setup is in the ballpark of \$175-200k







Sunken in bars and kitchens can be appealing to those dealing with significant elevation. Often times this will require extensive drainage planning and veneer costs. Ballpark for pool packages similar to this can vary greatly depending on what type of covering chosen. Ballpark for Top right: \$125-175k; bottom pic: \$175-200k (full kitchen)








# INFINITY OR NEGATIVE EDGE

*This infinity or negative edge pool starts around \$175k and really the sky is the limit. When you think infinity you have to imagine you are building 2 separate pools. This requires additional equipment, engineered designs (for some) and piers for stability. You will see varying pools on the next couple of pages that increase in price due to added features, specialty paver decking or the addition of turf just to name a few.*



**Emerald is the industry leading builder for infinity walls as they require specific building knowledge and technique. Ask our sales consultant for more detailed info.**





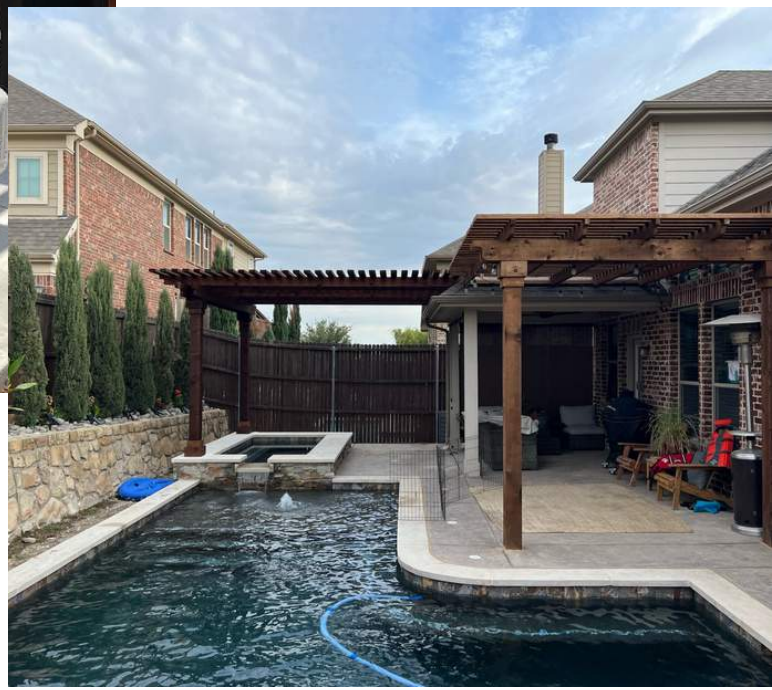






# OUTDOOR LIVING PERGOLA

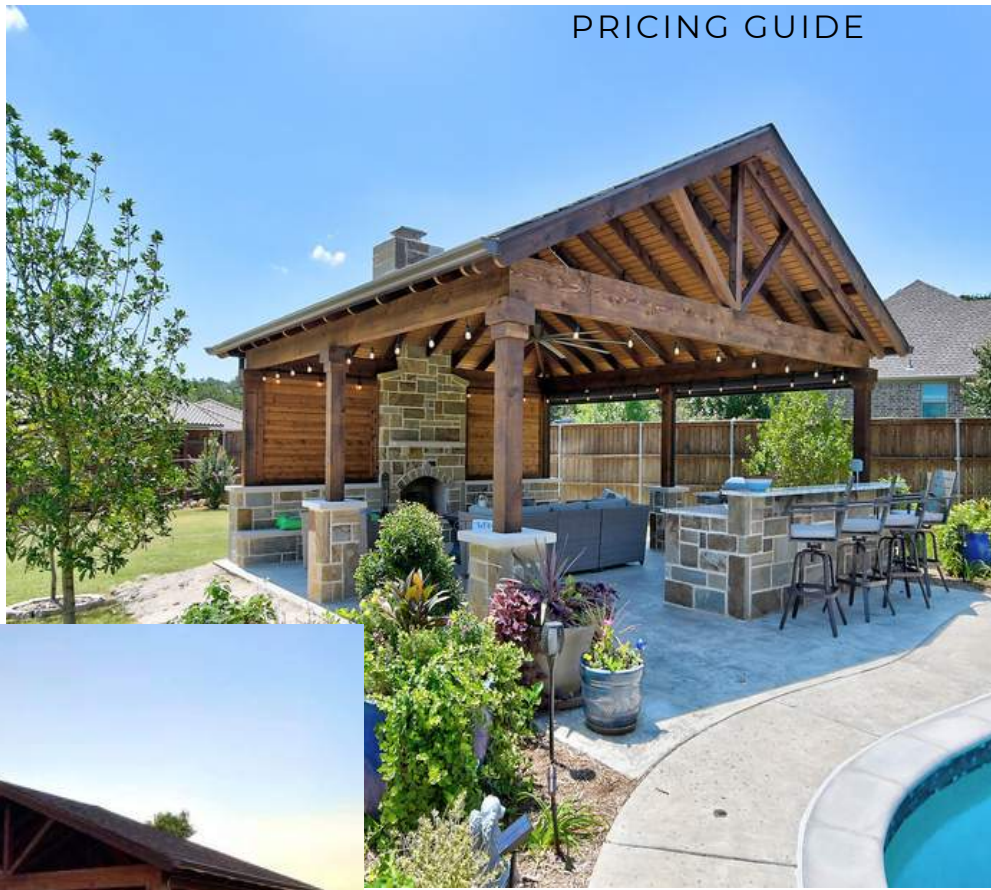
All of our pergolas are made of only the highest quality cedar and custom designed to fit your needs. Some are stand alone and others can be tied into the roof of your home.





# OUTDOOR LIVING CABANAS

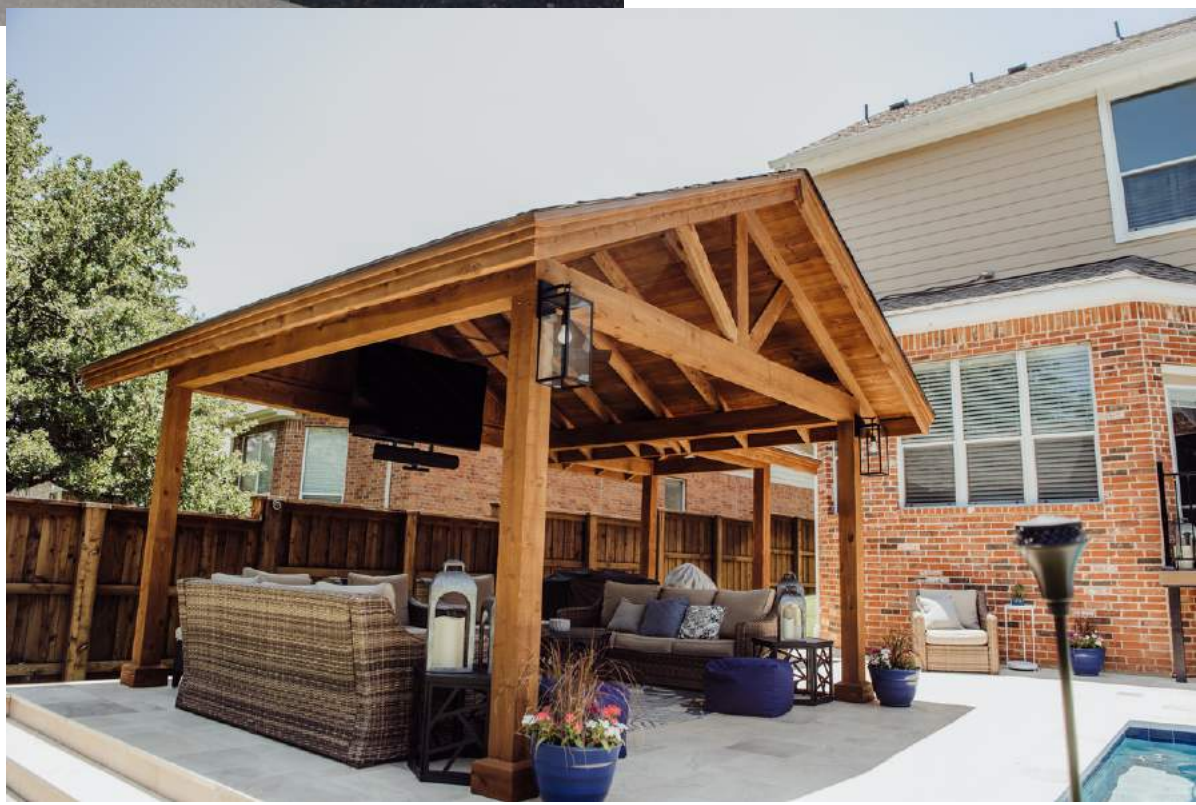
PRICING GUIDE



Cabanas start around \$12k and go up depending on size. Stone boots and privacy walls can be a great addition to any Cabana



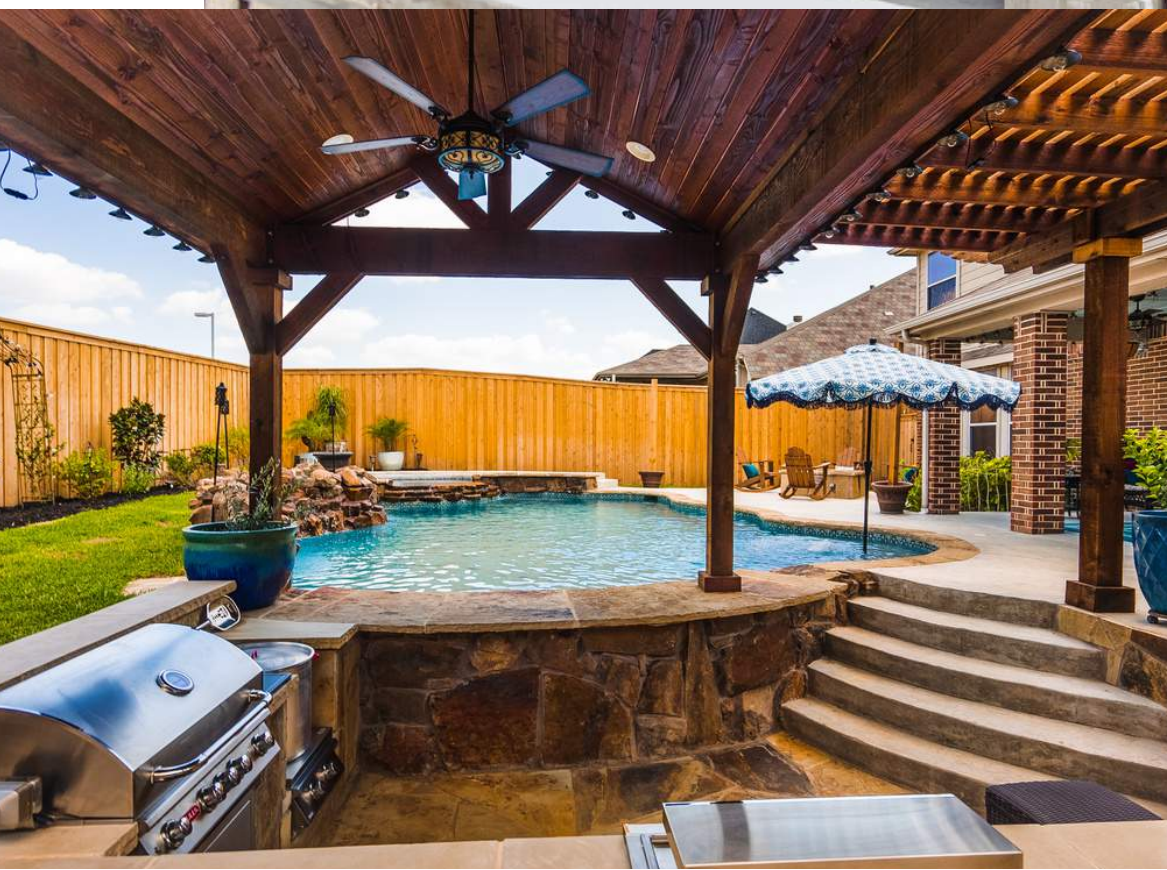






# OUTDOOR LIVING KITCHENS

PRICING GUIDE



Outdoor kitchens can definitely make your house the place to be. It is usually the perfect place to hang out year round. They start around \$4500 and go up depending on size and appliance additions.



## ATTACHED PERGOLAS/ CABANAS

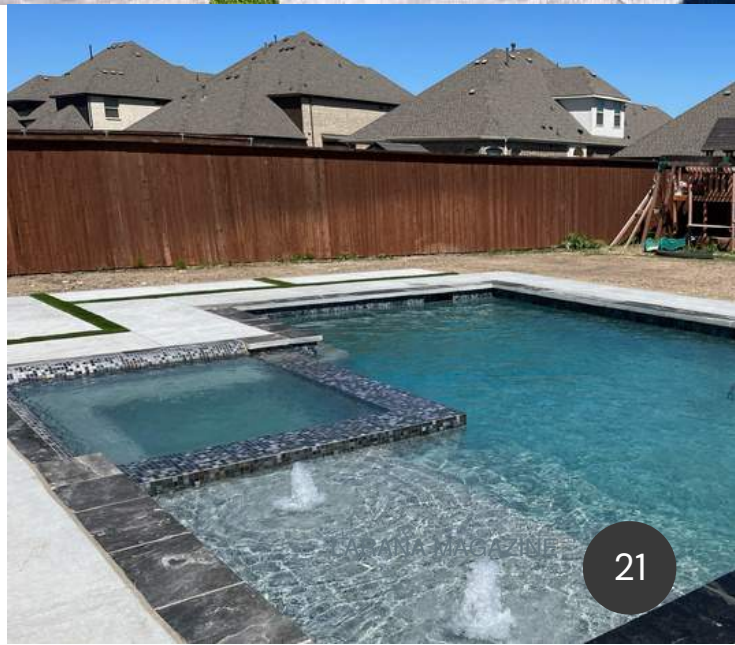
Attaching a pergola or Cabana to your existing home roof may seem to be an easy task, but these usually require us to bid each individually. The cost is also slightly higher as there are extra sq.ft. added to accommodate the tie-in to the roof.







Spas can vary in shape as well as elevation. Note full negative edge 360 spa (right) compared to flush spa (bottom right). Negative edge adds about \$5-10k to any spa package; whereas a flush spa can save you money.





# Spa Spillways

PRICING GUIDE

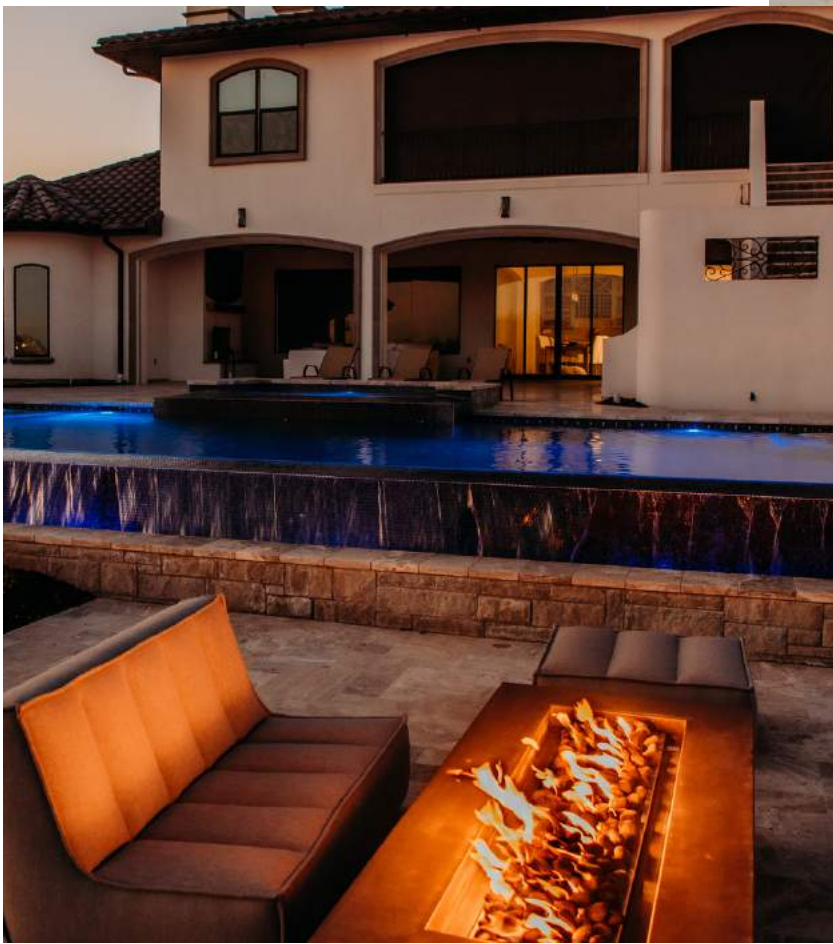


Stone spillways up to about 4 ft is standard. Additional length of spillway and/or adding 1inch tile can add to the cost





# FIRE FEATURES



These fire features are gas burning and come with either manual or automatic switches. All of these vary in cost starting around \$10k for each unit with installation.



## PRICING GUIDE

Start at around \$2850 for standard round or square, 12 inch high, wood burning firepit.



## Stone Fire Pits & Fireplaces

Start at around \$9500-12k requiring reinforced decking to be built correctly.





# Decking

Decking for Emerald includes no color skin, broom finish and salt deck as standard options with no additional charge.

Stamped concrete, mondo leave-outs (with or without turf) and Pavers of any kind can add significant cost.

PRICING GUIDE



No color skin



Salt Deck (color is additional \$)



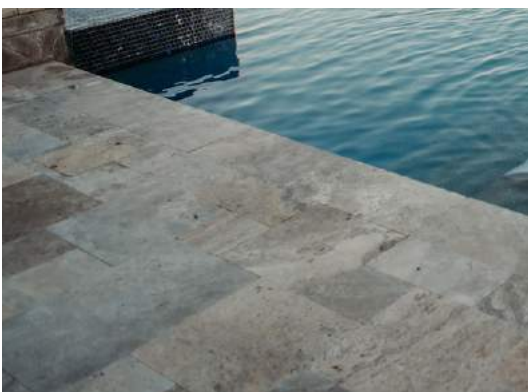
Stamped Concrete



Mondo Leave-Out



Travertine pavers in varying colors (above and left)



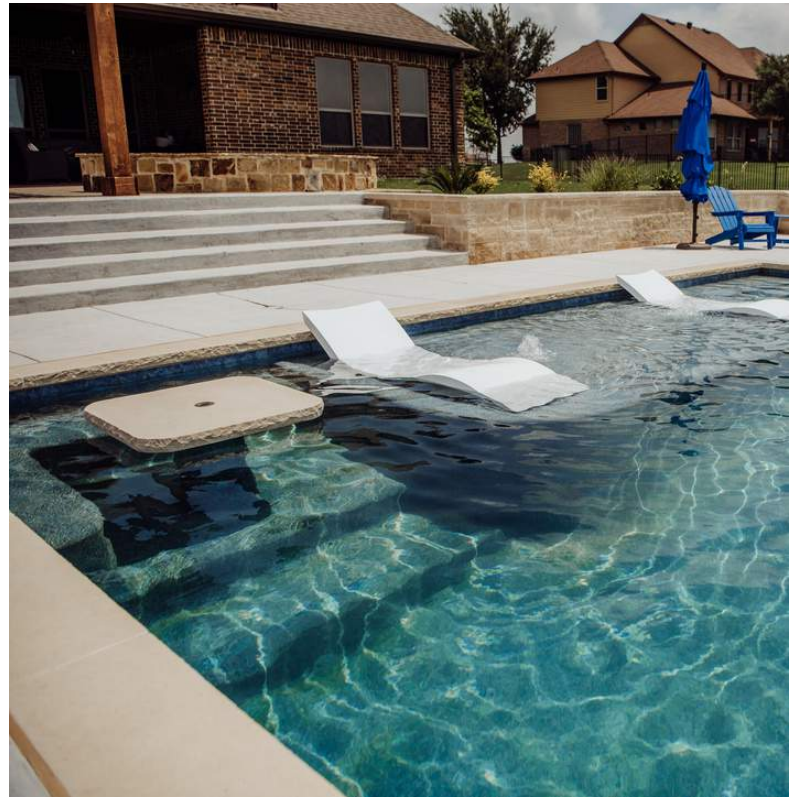


*Nothing says party  
like a margarita table*

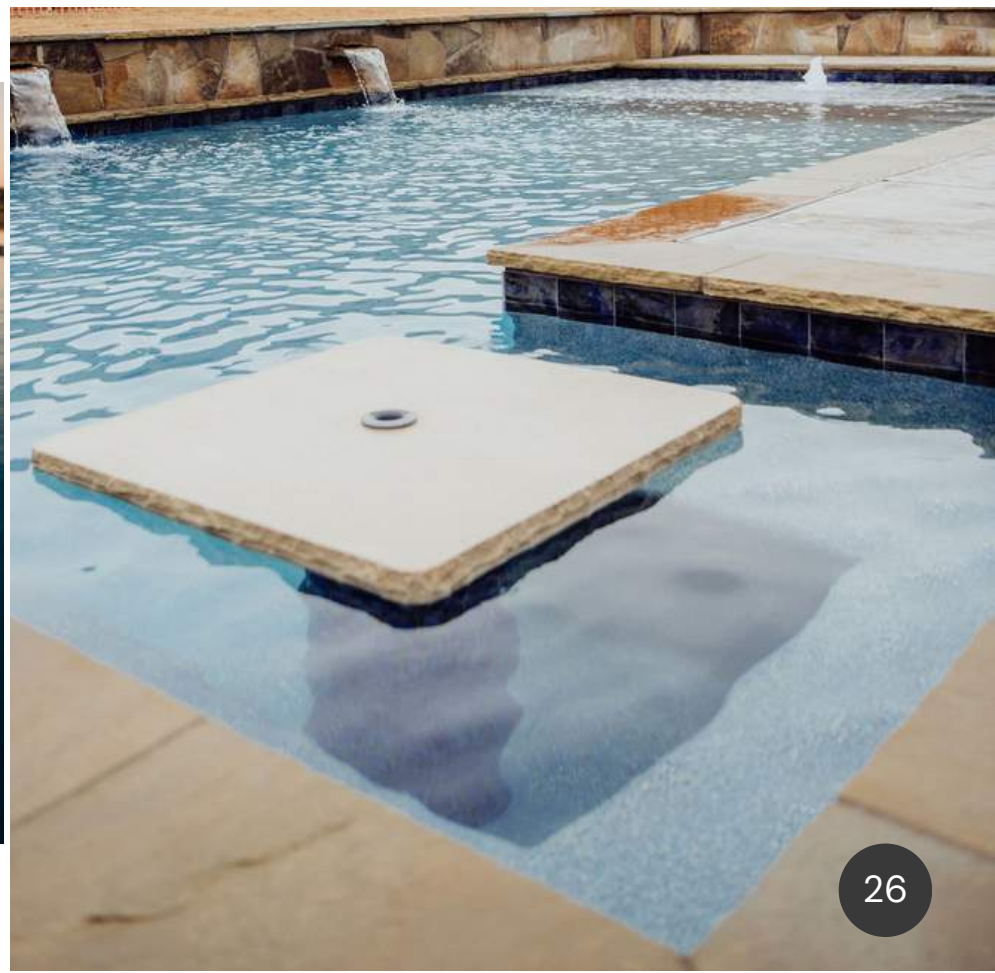


Standard

Margarita tables typically  
cost start at \$2500+  
depending on table top  
stone option and size



Upgrade stone above





Tile can add that extra touch to make your pool truly unique. Spotter tiles in the spa or along the tan ledge will always get noticed. Tiled barstools can be added to any party pool for extra seating.

## Tile





# Raised Beams & Scuppers



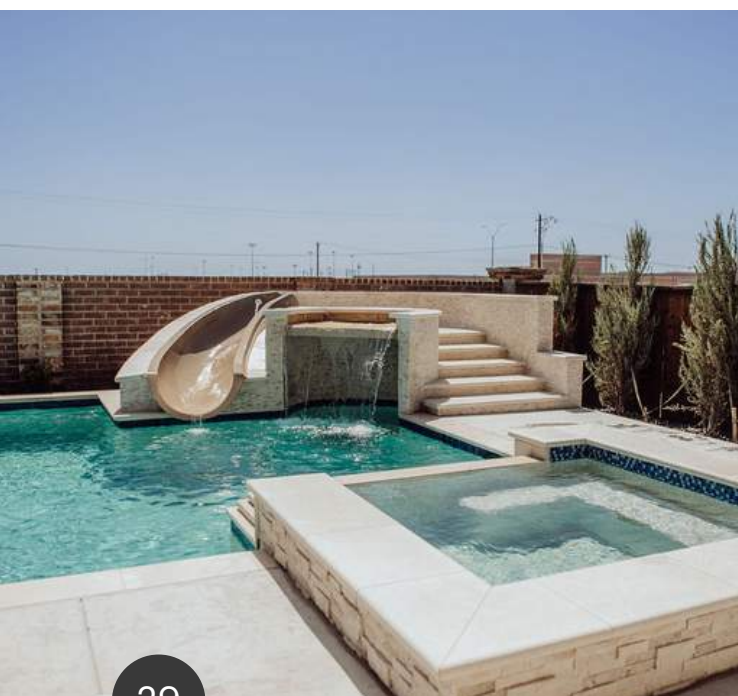
Pricing is dependent upon length and size with raised beams. There is usually a minimum of \$4500 and each scupper adds about \$1500 with installation.



# *Slides with & without Grottos*



Slides can start off at \$6000 for deck attached and increase depending on size of combo builds such as the grotto with a slide.





# Grottos

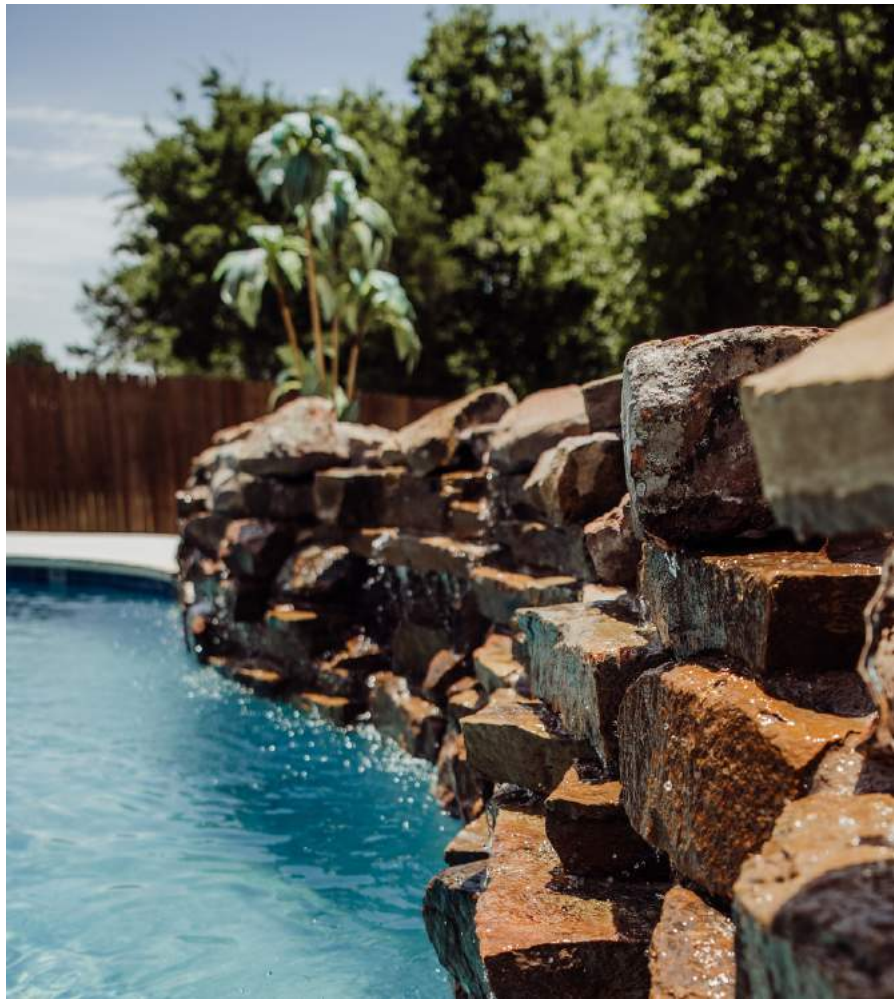


Full swim in grottos can be quite a bit more expensive (starting at around \$13000) than a cantilever grotto (right) starting around \$7500. Swim in grotto adds to the perimeter of your pool whereas a cantilever grotto just has a bench seat below the spillway inline with the pool.





## Weeping walls and Deck Jets



Deck jets are charged with a minimum of 2 costing \$750 each. Weeping walls will start around \$4500 and go up depending on height and length.



# Turf



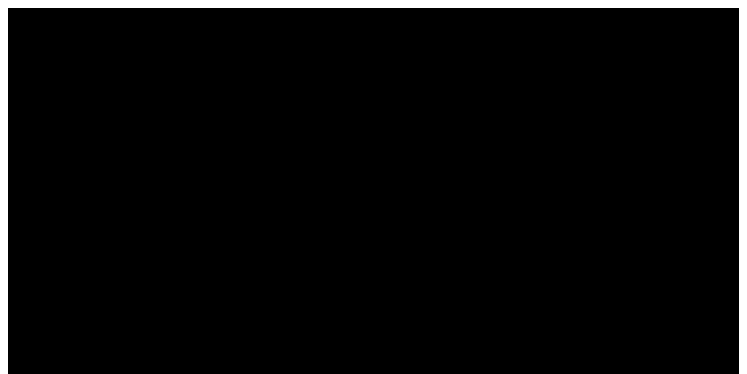


# Testimonials

"I LOVE EVERYTHING ABOUT EMERALD! FROM OWNERS & EMPLOYEES TO THE FINAL PRODUCT! THEY ARE TRUSTWORTHY AND RELIABLE. THEY ARE ALL GOOD PEOPLE AND A BREATHE OF FRESH AIR" ~ CADIE FRAZIER

"I USED EMERALD CUSTOM POOLS BECAUSE OF THEIR IN HOUSE CREW AND THEIR GREAT REVIEWS. THEY FINISHED IN A TIMELY MANNER AND HAVE BEEN VERY PROFESSIONAL REGARDING ANY AFTER CARE QUESTIONS- ISSUES. MY FINAL FEEDBACK IS HOW THEY HANDLE THINGS AFTER YOU PAY THEM. THEY HAVE HANDLED EVERYTHING WITH PURE PROFESSIONALISM AND ARE ALWAYS QUICK TO RESPOND. WE LOVE OUR POOL AND HOT TUB AND SO GLAD WE CHOSE EMERALD" ~ PERLA PIMENTAL

"WE HAD AN AWESOME EXPERIENCE WITH EMERALD CUSTOM POOLS. WE WERE SUPPOSED TO START JULY 4 AND THE EXCAVATION CREW SHOWED UP TWO WEEKS EARLY! FROM PLASTER TO THE ELECTRICIAN TO THE PROJECT MANAGER, EVERYTHING WAS TOP NOTCH. OUR POOL WAS DONE TWO MONTHS EARLY AND IS ABSOLUTELY BEAUTIFUL. ONE OF THE REASONS WE DID GO WITH EMERALD IS THEY HAVE THEIR OWN CREWS AND I HAVE NEVER SEEN SUCH HARD WORKING PEOPLE. SO VERY HAPPY WE DECIDED TO GO WITH EMERALD CUSTOM POOLS." ~ KELLI BISHOP







# WE ARE *Emerald* CUSTOM POOLS & PATIOS

Thank you for taking the time to look through our pricing guide. We hope you have found it helpful in your research. Our team is always available for any questions that you may have come up with. We are happy to sit down with you and make sure you are getting exactly what you have always dreamed of.

Visit us at <https://emeraldcustompools.com>

Facebook @ <https://www.facebook.com/Emeraldcustompools/>

Phone: 817-800-0786

Email: [Scheduling@emeraldcustompools.com](mailto:Scheduling@emeraldcustompools.com)

Or just stop in at our showroom at 116. W McLeroy Blvd. Saginaw TX 76179